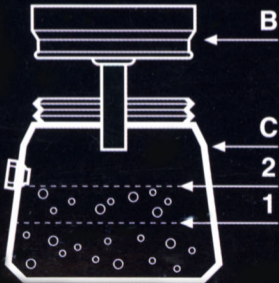


Gemini[®]
EXPRESS
ITALY





Before using the espresso maker, it should be carefully washed without using detergents but just with sodium bicarbonate or vinegar added to water. In order to aromatize the espresso maker we recommend to discard the first jugs of coffee. If using a gas-ring, keep a slow fire to obtain a creamy coffee. The percolator should be rinsed clean periodically. **CAUTION: Do not use any malt or finely ground coffee as for coffee makers with paper filter or electric.**

INSTRUCTIONS FOR USE

- **To obtain 2 cups:** fill the boiler (C) with water up to the second level (2). Fill the funnel (B) with ground coffee without pressing it.
- **To obtain 1 cup:** fill the boiler (C) with water up to the first level (1). Put the reducer filter (A) into the funnel (B) and fill it with ground coffee without pressing it.
- **To obtain 2 cups of lighter coffee:** fill the boiler (C) with water up to the second level (2). Put the reducer filter (A) into the funnel and fill it with ground coffee without pressing it.

